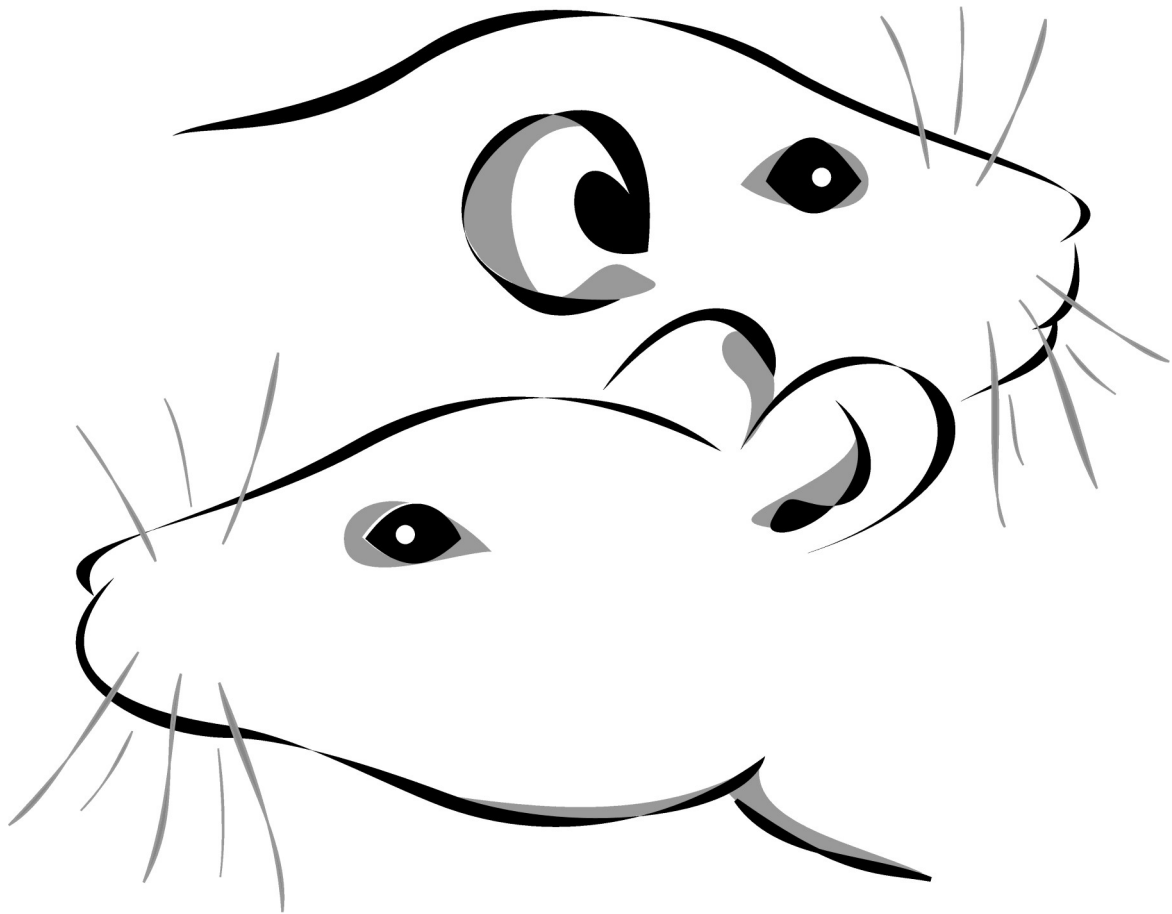
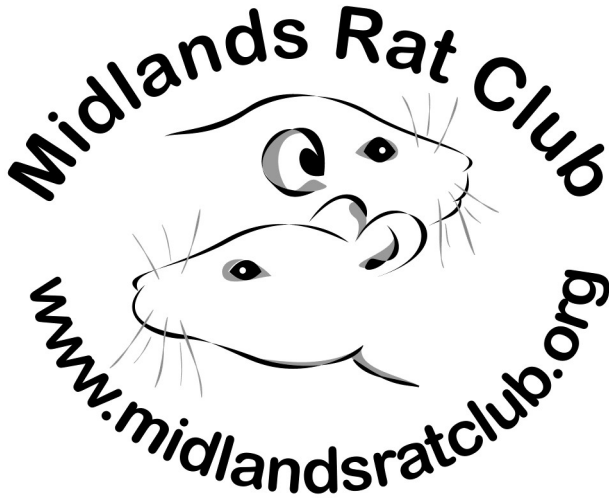


Midlands Rat Club



Merchandise

Merchandise



Logo:

This is logo used on all the clothing. It is embroidered to make sure you get a good life out of the product.

It is approx. 8cms wide on clothing items and will be adjusted to suit any kids items.

Logo will be placed on the left hand chest of all items. If you would like it elsewhere then please ask before ordering.

Embroidery colour

The logo can be done in either Black or White on your item of choice. Other colours are available but please ask for more details.

Extra's

You can have your name/nickname/rattery/stud added under the logo for £1.50 per item. Please make sure you write this clearly!

Collection or Post

You can either arrange to have your items collected at the next show or you can have the posted out to you at an extra charge. Please make sure, if you request to have the items posted, that you write your address & postcode down clearly.

Payment

Can be made in Cash at a show, cheque or paypal.

Postage

T-shirts (all styles) & Bags: 1st Class: £2.50, 1st class recorded: £3.25

Hoodies: 1st Class: £3.60, 1st class recorded: £4.40



JH005

Girlie Longline Hoodie

Girlie fit. Long length style. Twin needle stitching detailing. Three panel double fabric hood. Flat lace drawcords. Kangaroo pouch pocket with small hidden opening for ear phone cord feed. Hidden ear phone loops. Long rib cuff. Deep rib hem. Ribbed main pocket edge detail for comfort. Worldwide Responsible Apparel Production (WRAP) certified production

Size

XS - 8, **S** - 10, **M** - 12, **L** - 14

Fabric

80% Cotton, 20% Polyester

Weight

280gsm

Price: £30.00



French Navy



Heather Grey



Hot Pink



Jet Black



Purple



Sapphire Blue



H7120

Tagless - Women's long sleeve T-Shirt

Slim fit, follows the shape of the body. 1 x 1 rib collar with elastane for perfect stretchability and shape retention. Tagless. Side seams. Back neck tape for support and seam stability.

Chest to fit

S - 8/10 **M** - 12/14 **L** - 14/16 **XL** - 18/20 **2XL** - 22/24

Fabric

100% ComfortSoft™ Cotton

Fabric Weight

185gsm



Black



Light Pink



Navy



Orange



Red



Royal Blue



Sunflower Yellow



White

Price: £20.00



GD002

Ultra Cotton™ Adult T-shirt

Pre-shrunk jersey. Seamless double needle collar, taped neck and shoulders. Double stitched sleeve and waist hem. Quarter-turned body to eliminate centre crease.

Size Chest (to fit)

S - 34/36" **M** - 38/40" **L** - 42/44" **XL** - 46/48" **2XL** - 50/52" **3XL** - 54/56"

* Only available in 3XL

Fabric

100% cotton

Ash - 99% cotton, 1% polyester

Dark Heather - 50% cotton, 50% polyester

Sport Grey - 90% cotton, 10% polyester

Weight

White 195 gsm Colour 205 gsm



Price: £12.00



GD05B

Heavy Cotton™ Youth T-shirt

Pre-shrunk jersey. Seamless collar. Double needle top stitched neckline. Taped neck & shoulders. Double stitched sleeve & waist hem. Quarter-turned body to eliminate centre crease.

Size Chest (to fit)

XS (3/4) - 22/24" **S (5/6)** - 26/28" **M (7/8)** - 30" **L (9/11)** - 32/34" **XL (12/13)** - 34/36"

Fabric

100% Cotton

Ash: 99% Cotton, 1% Polyester.

Sport Grey: 90% Cotton, 10% Polyester.

Weight

175/185 gsm



Price: £11.00



GD037

Premium combed ringspun adult pique polo

Arched locked patch, mitre fold woven label created hanging loop, side seamed with vents, 3 pearlised buttons. Contoured welt and cuffs, twin needle stitching all over.

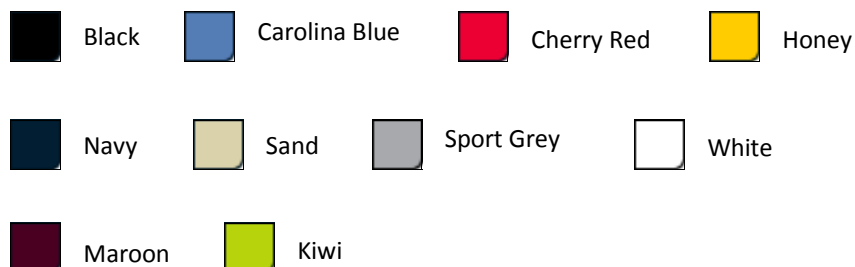
Size Chest (to fit)

S -36/38" **M** - 40" **L** - 42/44" **XL** - 46" **2XL** - 48"

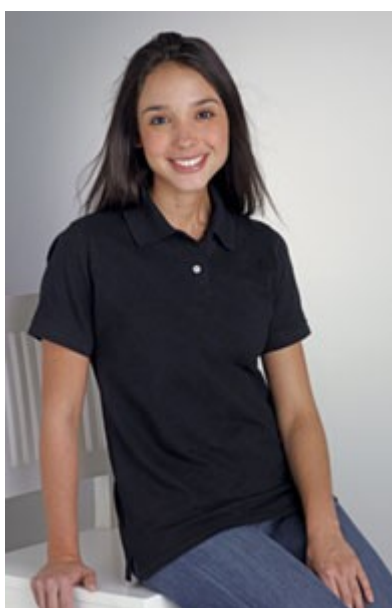
Fabric

100% Combed Ringspun Cotton.

Weight - White 205gsm, Colours 220gsm



Price: £17.50



GD075

Premium combed ringspun Ladies pique polo

Tailored women's fit. Reversed placket with reinforced bottom box. Back tack collar label, side seamed with vents. 2 pearlised buttons, contoured welt and cuffs. Twin needle bottom hem.

Size

XS - 8, **S** - 10, **M** - 12, **L** -14, **XL** - 16, **2XL** - 18"

Fabric

100% Combed ringspun cotton.

Weight

White 205gsm, Colours 220gsm



Price: £17.50



JH055

Girly zoodie

Full zip hoodie with girly fit, covered main zip with self fabric and twin needle stitching detailing. Double fabric hood with self coloured cords and kangaroo pouch pocket. Right hand side pocket has small hidden opening for ear phone cord feed with hidden ear phone loops. Ribbed cuff and hem with deep hem and ribbed main pocket edge detail for comfort. Self coloured twill tape puller. Worldwide Responsible Apparel Production (WRAP) certified production. Male equivalent.

Size (to fit) XS - 8 S - 10 M - 12 L - 14 XL - 16

**XL only available in this product.*

Fabric Type

80% Cotton, 20% Polyester

Weight

280gsm



Arctic White



Baby Pink



Fire Red



French Navy*



Heather Grey*



Hot Pink*



Jet Black*



Kelly Green



Purple*



Sapphire Blue



Sky Blue



True Violet

Price: £30.00



JH050

Zoodie

Full zip hoodie with a covered main zip. Self fabric with twin needle stitching detailing and double fabric hood with self coloured cords and kangaroo pouch pocket. Right hand side pocket has small hidden opening for ear phone cord feed and hidden ear phone loops. Ribbed cuff and hem and self coloured twill tape puller.

Size Chest (to fit) S - 36" M - 40" L - 44" XL - 48" 2XL - 52"*

**2XL only available in these colours.*

Fabric Type

80% Cotton 20% Polyester

Weight

280gsm



Arctic White



Bottle Green



Charcoal



Fire Red



French Navy*



Heather Grey*



Hot Chocolate



Jet Black*



Kelly Green



Purple*



Red Hot Chilli



Royal Blue



Sapphire Blue

Price: £30.00



JH50J

Kid's zoodie

Full zip hoodie with covered main zip with self fabric. Twin needle stitching detailing with double fabric hood and self coloured twill tape puller. Kangaroo pouch pocket and ribbed cuff and hem, no drawcords to comply with EU regulation. Worldwide Responsible Apparel Production (WRAP) certified production.

Also available in adult size

Age

5/6 7/8 9/11 12/13

Fabric Type

80% Cotton, 20% Polyester

Weight

280gsm



Bottle Green



Fire Red



French Navy



Heather Grey



Hot Pink



Jet Black



Purple



Royal Blue



Sapphire Blue

Price: £23.00



GD051

Ultra Cotton™ Adult hooded sweatshirt

Double lined hood with matching Drawstring at neckline. Double stitched pouched pocket, neck and armhole. Double stitched sleeve and waist rib. 2x1 fashion rib with Lycra®. Quarter-turned body to eliminate centre crease

Size Chest (to fit)

S - 34/36" **M** - 38/40" **L** - 42/44" **XL** - 46/48" **2XL** - 50/52"

Fabric

80% Cotton / 20% Polyester

Weight

325 gsm



Ash



Black



Dark Chocolate



Dark Heather



Indigo Blue



Maroon



Navy



Red



Forest



Sport Grey



White

Price: £27.50



HB812

Pull-on hooded sweatshirt

Double hood with drawcord. Kangaroo pocket. V-insert panel under arms with antique brass effect rivets. Twin needle stitching throughout. Forward shoulder seam. Rib cuffs and hem.

Size Chest (to fit)

XS - 34" **S** - 36" **M** - 38/40" **L** - 42" **XL** - 44/46" **2XL** - 48"

Fabric

80% Cotton, 20% Polyester

Weight

300 gsm

Price: £32.50



Black



Burnt Orange



Chocolate



Classic Red



Heather Grey



Navy



Olive



Powder Blue



Purple



Royal



White



B130F

Blondie Classic/Women

Short-sleeved T-shirt. Feminine V-Neck collar in self fabric with edge stitching. Raglan sleeves. Bottom and sleeve hems with double top stitching. Inside flatlock for more comfort. Necktape. Side seams.

Size

XS - 8, **S** - 10, **M** - 12, **L** - 14, **XL** - 16

Fabric

100% pre-shrunk ring-spun combed cotton
Single Jersey

Weight

120 gsm

Price: £15.00



Black



Fuchsia



Kelly Green



Red



Royal Blue



White



H2430

Tasty tank top

Perfectly feminine style. New super soft yarn for a perfect silky feel. Relaxed fitting. Soft rolled hem on neckline.

Size:

S - 10 **M** - 12 **L** - 14 **XL** - 16

Fabric

Super Soft 95% Ringspun Combed Cotton, 5% Elastane

Weight

200gsm



Black



Khaki



Light Pink



Navy



Orange



Red



Royal Blue



Sky Blue



Sunflower Yellow



White

Price: £17.50



WM101

Promo shoulder tote

Can be carried by hand or over the shoulder.
Capacity: 10 Litres.

Dimensions

42 x 38cm

Embroidery

18 Tubular Hoop

Approx Print Area

36 x 33cm

Fabric

100% Cotton

Price:
£12.00



Black



Bottle Green



Bright Red



Bright Royal



Burgundy



Caramel



Chestnut



Chocolate



Classic Pink



Cornflower Blue



Cranberry



French Navy



Fuchsia



Kiwi



Lime Green



Natural



Olive Green



Orange



Pure Green



Purple



Sky Blue



Sunflower



Surf Blue



White



Yellow



WM107 Promo Sling Tote

Rip-Strip™ closure. Self fabric shoulder strap.

Fabric

100% Cotton – 140gsm (4.1 oz/yd²)

Approx Dimensions

40x34 cm

Capacity

8 litres



Black



Bright Red



Bright Royal



Classic Pink



Natural



Orange



White



Pure Green

Price: £12.00



SK220 Layered Ringer T Modern fit women's T. Longer length. Shaped side seams. Double layer, contrast fabric at neckline, armhole and hem. Matches SF220, Men's Ringer T and SM220 Kids Ringer T

Size

S - 8/10, **M** - 12/14, **L** - 16, **XL** - 18

Fabric

100% Cotton, single jersey.

Weight

140gsm

Price: £17.50



Black/Purple



Fuchsia/Heather



Heather/Navy



Sapphire Blue/White



White/Hot Pink



SS030

Valuweight teeP

roduced using Belcoro® yarn for a softer feel and cleaner printing process. Cotton/Lycra® rib crew neck. Twin needle stitching detail on neck, sleeves and hem.

Also available in kids'

Size Chest (to fit)

S - 35/37" **M** - 38/40" **L** - 41/43" **XL** - 44/46" **XXL** - 47/49" **3XL** - 50/52"

**3XL available in Black, Heather Grey, Navy and White only.*

Fabric

Midweight 100% Cotton Belcoro® Yarn
Ash 99% Cotton, 1% Polyester
Heather Grey 97% Cotton, 3% Polyester

Weight

White 160 gsm, Colours 165 gsm

Price: £12.00



Apricot



Ash



Azure Blue



Black



Bottle Green



Brick Red



Burgundy



Sunflower



Charcoal



Chocolate



Classic Olive



White



Deep Navy



Heather Grey



Kelly Green



Yellow



Khaki



Light Graphite



Light Pink



Natural



Navy



Orange



Purple



Red



Royal Blue



Sky Blue



Steel Blue