

## Corporate Membership

This membership has been designed for those who have rat related businesses to promote themselves within our club. You do not receive any form of membership pack, but you will get a membership keyring with a reference number and the date your membership started to confirm that you have joined.

You can join our club and still have a corporate membership as an add-on if you should wish. Normal membership prices will apply.

As a Corporate member you will get the following benefits:

- **Advertising at each show**  
A5 leaflets, A6 postcards and/or business cards are on display on the publicity stand at every show where people are free to take them. We ask that they be no bigger than A5 in size.
- **Goody Bags**  
At each show we give out goody bags to families/people who aren't members of our club to inform them of what we are all about. A business card or advertising leaflet for your company will be included in these packs or any discount vouchers or special promotions you wish to include.
- **Trade stalls at our shows**  
as a member you have the opportunity to have stall at our shows. We charge £10 for the first table and £5 for each additional table required.
- **A ¼ page advert in each magazine.**  
This can be upgraded to ½ page for £25 or a full page for £50 per year. We can help you design these, if you wish.  
¼ page size: x W6.5cms x H9.5cms, ½ page size: W13.5cms x H9.5cms, Full page size: W14cms x H20cms. For a single issue upgrade ½ page £5 per issues and full page £10 per issue.
- **A link on our website**  
Our website gets many hits from various sources so a link here would be great. If you have a website, we would greatly appreciate a link back to our site. You can also advertise your business via our Facebook page.
- **Rosettes Sponsorship**  
Rosettes are given out to the winners of each class at a show. Your sponsorship last for 12 months and ensures your business gets recognised during the presentation ceremonies. We shall select one of the varieties which are shown more often on your behalf.
- **Event Sponsorship**  
We occasionally look at running a show and/or display at a county show or an exhibition show (eg Love Pets). We will let you know when these are planned for in the calendar.

**All this for the small cost of  
£25 per year for members and  
£30 a year for non-members.**

## General

The corporate membership has no voting rights.

The corporate membership does not require you to be a Midlands Rat Club member. It is a completely separate membership. You won't receive any of the membership items that the Adult, senior or family membership receives.

You will receive a membership number to confirm your membership. This number will be needed for any communications.

Please provide appropriate materials for the advertising leaflets/flyers/cards for your business as these are not included in the price of your membership. You will be advised when stocks of your items are running low.

## Advert Sizes

Below are examples of the sizes available.

**¼ page advert** - W6.5cms x H9.5cms (included in the price of your membership)

**Midlands Rat Club**

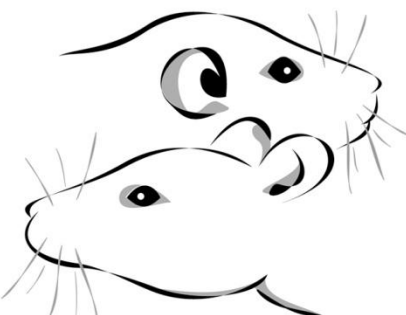


We are the ideal place to find out about rats and to learn the joys of keeping these fantastic pets for yourself.

[www.midlandsratclub.org](http://www.midlandsratclub.org)

**½ page advert** - W13.5cms x H9.5cms, upgrade for £5 per issue or £25 for 6 issues.

**Midlands Rat Club**

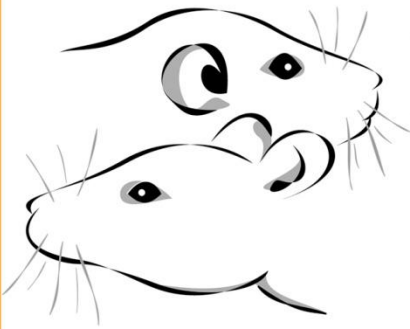


The Midlands Rat Club (MRC) was set up in 2001, to promote the keeping of rats as pets and to encourage people to show their rats in a competitive but companionable atmosphere, and has grown into a vibrant and thriving community of rat lovers.

We are the ideal place to find out about rats and to learn the joys of keeping these fantastic pets for yourself.

[www.midlandsratclub.org](http://www.midlandsratclub.org)

**Full page advert - W14cms x H20cms, upgrade for £10 per issue or £50 for 6 issues**



# Midlands Rat Club

Love rats...then you will love  
the Midlands rat club.

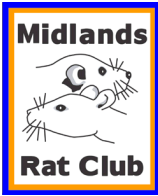


We hold shows across the Midlands where  
rat lovers can meet and have some fun.

We are the ideal place to find out about  
rats and to learn the joys of keeping  
these fantastic pets for yourself.

**We hope you can join us!**

**[www.midlandsratclub.org](http://www.midlandsratclub.org)**



# Midlands Rat Club

Corporate Membership Application Form



Business Name: \_\_\_\_\_

Contact Person Name: \_\_\_\_\_

Business Address: \_\_\_\_\_

\_\_\_\_\_

Telephone Number: \_\_\_\_\_

Mobile Number: \_\_\_\_\_

E-mail Address: \_\_\_\_\_

## Subscription Type

MRC Member - £25 a year

Non-MRC Member - £30 per year

*Advert upgrades:*

Half page £25 per year

Full page £50 per year

I/We have enclosed a cheque / postal order for £ \_\_\_\_\_ made payable to **Midlands Rat Club**.

I/We would like to pay via paypal - [membership@midlandsratclub.org](mailto:membership@midlandsratclub.org)

I / We agree to abide by the Rules of the Midlands Rat Club. Under the Data Protection Act 1998 the Midlands Rat Club will only use this information for club purposes. This information will not be shared with any third party.

*Signed*

*Dated*

Please let us know where you hear about the Midlands Rat Club:

**Please return your completed application form to:** MRC Corporate Membership, 268, Bretch Hill, Banbury, Oxfordshire OX 16 0LT **E-mail:** [publicity@midlandsratclub.org](mailto:publicity@midlandsratclub.org)

**Upon acceptance of your application you will receive your receipt and your membership keyring. We shall be contact with you to discuss your advert for our magazine and the advertising materials.**

**NOTE:** Receipt of the payment and/or application form does not constitute an acceptance of membership. *Please allow a maximum of 28 days for your application to be processed.*